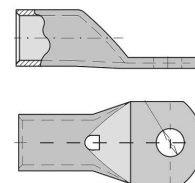
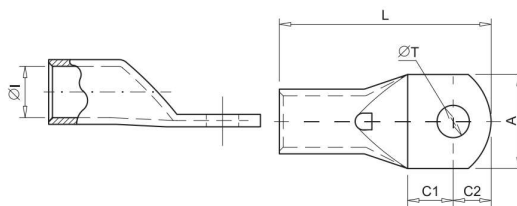


UKONČOVACIE PRVKY VODIČOV

MEDENÉ LISOVACIE OKÁ TRUBKOVÉ BEZ IZOLÁCIE

- materiál: E-Cu, galvanicky Sn
- kontrolný otvor
- IEC 61238-1

- material : E-Cu, e-plated Sn
- inspection hole
- IEC 61238-1



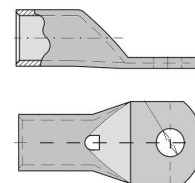
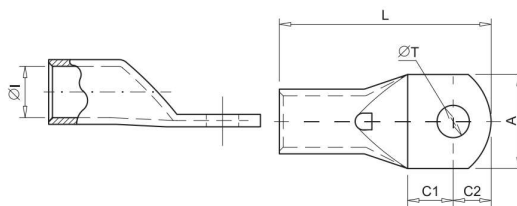
Objednáv. kód	Prierez (mm ²)	Øl (mm)	L (mm)	ØT (mm)	A (mm)	C ₁ (mm)	C ₂ (mm)	Min. balenie (ks)
NKOT 1,5/4	0,5 - 1,5	1,8	18,0	4,3	8,7	5,0	4,0	100
NKOT 1,5/5			18,5	5,3	8,7	5,0	4,5	100
NKOT 1,5/6			20,0	6,4	11,0	6,0	5,0	100
NKOT 2,5/4	1,5 - 2,5	2,7	18,0	4,3	8,7	5,0	4,0	100
NKOT 2,5/5			19,0	5,3	8,7	5,5	4,5	100
NKOT 2,5/6			20,0	6,4	9,0	6,0	5,0	100
NKOT 2,5/8			24,0	8,3	12,0	8,0	7,0	100
NKOT 4/4	4,0	3,3	21,0	4,3	8,7	5,0	4,5	100
NKOT 4/5			21,0	5,3	8,7	5,0	4,5	100
NKOT 4/6			23,0	6,4	11,0	6,0	5,5	100
NKOT 4/8			26,5	8,3	14,0	8,0	7,0	100
NKOT 6/4	4,0 - 6,0	3,8	23,0	4,3	10,3	6,0	5,5	100
NKOT 6/5			23,0	5,3	10,3	6,0	5,0	100
NKOT 6/6			24,0	6,4	10,3	6,0	5,5	100
NKOT 6/8			27,0	8,3	14,0	6,0	7,0	100
NKOT 10/5	10	4,7	25,5	5,3	11,9	6,0	5,5	100
NKOT 10/6			27,0	6,4	11,9	7,0	6,0	100
NKOT 10/8			30,0	8,3	15,0	8,0	8,0	100
NKOT 10/10			34,0	10,5	18,0	10,5	9,5	100
NKOT 16/5	16	5,6	26,5	5,3	11,9	6,0	5,0	100
NKOT 16/6			28,5	6,4	11,9	7,0	6,0	100
NKOT 16/8			31,0	8,3	15,0	8,0	7,5	100
NKOT 16/10			34,5	10,5	18,0	10,0	9,0	100
NKOT 16/12			38,5	13,0	20,0	12,0	11,0	100
NKOT 25/6	25	7,1	31,0	6,4	13,5	7,0	6,0	100
NKOT 25/8			34,0	8,3	15,0	8,5	7,5	100
NKOT 25/10			39,0	10,5	18,0	11,0	10,0	100
NKOT 25/12			41,0	12,0	21,0	12,0	11,0	100
NKOT 35/6	35	8,7	34,0	6,4	15,7	7,0	6,0	100
NKOT 35/8			38,0	8,3	15,7	9,0	8,0	100
NKOT 35/10			42,0	10,5	19,0	11,0	10,0	100
NKOT 35/12			44,0	13,0	21,0	12,0	11,0	100
NKOT 35/14			48,0	14,5	21,0	14,0	13,0	100
NKOT 50/6	50	9,8	41,0	6,4	17,9	8,0	7,0	50
NKOT 50/8			43,0	8,3	17,9	9,0	8,0	50
NKOT 50/10			47,0	10,5	20,0	11,0	10,0	50
NKOT 50/12			51,0	13,0	21,0	13,0	12,0	50
NKOT 50/14			53,0	14,5	25,0	14,0	13,0	50
NKOT 50/16			55,0	16,5	26,0	15,0	14,0	50

UKONČOVACIE PRVKY VODIČOV

MEDENÉ LISOVACIE OKÁ TRUBKOVÉ BEZ IZOLÁCIE

- materiál: E-Cu, galvanicky Sn
- kontrolný otvor
- IEC 61238-1

- material : E-Cu, e-plated Sn
- inspection hole
- IEC 61238-1



Objednáv. kód	Prierez (mm ²)	ØI (mm)	L (mm)	ØT (mm)	A (mm)	C ₁ (mm)	C ₂ (mm)	Min. balenie (ks)
NKOT 70/8	70	11,5	47,0	8,3	21,5	9,0	8,0	20
NKOT 70/10			51,0	10,5	21,5	11,0	10,0	20
NKOT 70/12			53,0	13,0	21,5	12,0	11,0	20
NKOT 70/14			58,0	14,5	25,0	15,0	13,0	20
NKOT 70/16			59,0	16,5	26,0	15,0	14,0	20
NKOT 95/8	95	13,5	52,0	8,3	24,7	10,0	9,0	20
NKOT 95/10			55,0	10,5	24,7	11,0	11,0	20
NKOT 95/12			57,0	13,0	24,7	12,0	12,0	20
NKOT 95/14			61,0	14,5	24,7	15,0	13,0	20
NKOT 95/16			64,0	16,5	27,0	16,0	15,0	20
NKOT 120/8	120	15,6	56,0	8,3	28,9	10,0	9,0	10
NKOT 120/10			58,0	10,5	28,9	11,0	10,0	10
NKOT 120/12			63,0	13,0	28,9	14,0	12,0	10
NKOT 120/14			67,0	14,5	28,9	16,0	14,0	10
NKOT 120/16			71,0	16,5	28,9	17,0	16,0	10
NKOT 150/10	150	16,5	69,0	10,5	30,4	13,0	11,0	10
NKOT 150/12			75,0	13,0	30,4	16,0	14,0	10
NKOT 150/14			79,0	14,5	30,4	18,0	16,0	10
NKOT 150/16			79,0	16,5	30,4	18,0	16,0	10
NKOT 185/10	185	18,8	74,0	10,5	34,0	13,0	11,0	10
NKOT 185/12			80,0	13,0	34,0	16,0	14,0	10
NKOT 185/14			84,0	14,5	34,0	18,0	16,0	10
NKOT 185/16			85,0	16,5	34,0	18,0	17,0	10
NKOT 240/10	240	21,2	82,0	10,5	38,4	14,0	12,0	5
NKOT 240/12			86,0	13,0	38,4	16,0	14,0	5
NKOT 240/14			90,0	14,5	38,4	18,0	16,0	5
NKOT 240/16			91,0	16,5	38,4	18,0	17,0	5
NKOT 300/12	300	23,4	93,0	13,0	41,7	16,0	14,0	5
NKOT 300/14			94,0	14,5	41,7	16,0	15,0	5
NKOT 300/16			100,0	16,5	41,7	19,0	18,0	5
NKOT 400/12	400	26,8	110,0	13,0	47,8	21,0	19,0	5
NKOT 400/16			110,0	14,5	47,8	21,0	19,0	5
NKOT 400/20			116,0	16,5	47,8	24,0	22,0	5
NKOT 500/16	500	29,8	115,0	16,5	54,8	22,0	19,0	1
NKOT 630/16	600	34,5	128,0	16,5	64,4	22,0	19,0	1
NKOT 630/20			134,0	21,0	64,4	24,0	23,0	1
NKOT 800/16	800	40,0	145,0	16,5	64,4	24,0	23,0	1
NKOT 800/20			145,0	21,0	64,4	24,0	23,0	1