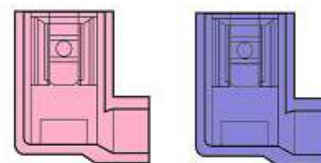
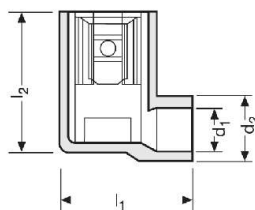


# UKONČOVACIE PRVKY VODIČOV

## DUTINKY PLOCHÉ 90ST - PA

- **materiál:** E-Cu, galvanicky Sn
- **izolácia:** PA polyamid (nylon)
- **pracovná teplota :** od -55°C do +105°C
- **Cu Easy Entry Double Grip** - s Cu vložkou pre ľahké vkladanie vodiča a zosilnený spoj po zalisovaní
- UL listed

- **material :** E-Cu, tin plated
- **insulation:** PA polyamid (nylon)
- **temperature range:** -55°C to +105°C
- **Cu Easy Entry Double Grip** - with copper sleeve
- UL listed



Objednáv. kód	Prierez (mm <sup>2</sup> )	L <sub>1</sub> (mm)	L <sub>2</sub> (mm)	D <sub>1</sub> (mm)	D <sub>2</sub> (mm)	Min. balenie (ks)
RF-F405PL	0,5 - 1,5	14,0	15,0	4,5	6,5	100
RF-F408PL		14,0	15,0	4,5	6,5	100
RF-F608PL		15,0	15,5	4,5	6,5	100
BF-F405PL	1,5 - 2,5	14,0	15,2	4,5	6,5	100
BF-F408PL		14,0	15,2	4,5	6,5	100
BF-F608PL		15,0	15,5	4,5	6,5	100