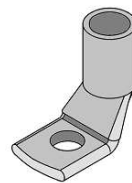
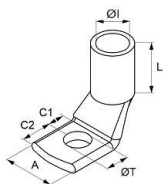


UKONČOVACIE PRVKY VODIČOV

MEDENÉ LISOVACIE OKÁ TRUBKOVÉ BEZ IZOLÁCIE, 90°

- **materiál:** E-Cu, galvanicky Sn
- 90° uhol
- IEC 61238-1, EN 60228

- **material :** E-Cu, e-plated Sn
- 90° angle
- IEC 61238-1



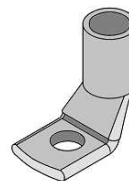
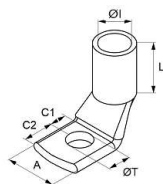
Objednáv. kód	Prierez (mm ²)	ØI (mm)	L (mm)	ØT (mm)	A (mm)	C ₁ (mm)	C ₂ (mm)	Min. balenie (ks)
NKOL 10/5	10	4,7	10,0	5,2	11,0	6,0	5,0	100
NKOL 10/6			10,0	6,4	11,9	7,0	6,0	100
NKOL 10/8			10,0	8,3	15,0	8,0	8,0	100
NKOL 10/10			10,0	10,5	17,2	9,0	9,5	100
NKOL 10/12			10,0	12,2	17,0	9,0	9,3	100
NKOL 16/5	16	5,6	11,0	5,2	11,5	8,0	6,3	100
NKOL 16/6			11,0	6,4	11,9	7,0	6,0	100
NKOL 16/8			11,0	8,3	15,0	8,0	7,5	100
NKOL 16/10			12,0	10,5	17,5	9,5	10,0	100
NKOL 16/12			12,0	13,0	17,5	9,5	10,0	100
NKOL 25/5	25	7,1	13,5	5,2	14,0	9,0	7,0	50
NKOL 25/6			13,5	6,4	14,0	9,0	7,0	50
NKOL 25/8			13,0	8,3	15,0	8,5	7,5	50
NKOL 25/10			13,0	10,5	18,0	11,0	10,0	50
NKOL 25/12			14,0	13,0	18,5	10,0	9,5	50
NKOL 35/6	35	8,7	15,0	6,4	17,0	7,0	6,0	50
NKOL 35/8			16,0	8,3	15,7	9,0	8,0	50
NKOL 35/10			16,0	10,5	19,0	11,0	10,0	50
NKOL 35/12			15,0	13,0	20,0	13,0	11,5	50
NKOL 50/6	50	9,8	18,0	6,4	18,7	8,0	9,0	20
NKOL 50/8			18,0	8,3	18,7	9,0	10,0	20
NKOL 50/10			19,0	10,5	20,0	11,0	10,0	20
NKOL 50/12			19,5	13,0	21,0	13,0	12,0	20
NKOL 50/14			17,0	14,5	22,0	14,0	12,0	20
NKOL 70/6	70	11,5	20,5	6,4	13,5	9,0	10,0	20
NKOL 70/8			20,5	8,3	15,0	9,0	10,0	20
NKOL 70/10			21,0	10,5	18,0	11,0	10,0	20
NKOL 70/12			21,0	13,0	21,0	12,0	12,0	20
NKOL 70/14			20,5	14,5	15,7	12,5	11,3	20
NKOL 70/16			20,5	16,5	15,7	12,5	11,3	20
NKOL 95/8	95	13,5	23,0	8,3	19,0	10,0	12,5	20
NKOL 95/10			23,0	10,5	21,0	10,0	12,5	20
NKOL 95/12			23,0	13,0	21,0	11,5	13,0	20
NKOL 95/14			24,0	14,5	17,9	15,0	13,0	20
NKOL 95/16			24,0	16,5	17,9	16,0	15,0	20
NKOL 120/8	120	15,6	25,0	8,3	20,0	11,5	14,0	10
NKOL 120/10			25,0	10,5	21,0	11,5	14,0	10
NKOL 120/12			25,0	13,0	25,0	11,5	14,0	10
NKOL 120/14			28,0	14,5	26,0	16,0	14,0	10
NKOL 120/16			28,0	16,5	28,0	17,0	16,0	10

UKONČOVACIE PRVKY VODIČOV

MEDENÉ LISOVACIE OKÁ TRUBKOVÉ BEZ IZOLÁCIE, 90°

- **materiál:** E-Cu, galvanicky Sn
- 90° uhol
- IEC 61238-1, EN 60228

- **material :** E-Cu, e-plated Sn
- 90° angle
- IEC 61238-1



Objednáv. kód	Prierez (mm ²)	ØI (mm)	L (mm)	ØT (mm)	A (mm)	C ₁ (mm)	C ₂ (mm)	Min. balenie (ks)
NKOL 150/8	150	16,5	28,0	8,3	31,0	10,0	11,0	10
NKOL 150/10			28,0	10,4	31,0	10,0	11,0	10
NKOL 150/12			28,0	12,5	31,0	11,0	13,0	10
NKOL 150/14			32,0	14,5	30,4	18,0	16,0	10
NKOL 150/16			32,0	16,5	30,4	18,0	16,0	10
NKOL 150/20			30,0	21,0	31,0	20,0	20,0	10
NKOL 185/10	185	18,8	35,0	10,4	35,0	12,5	14,0	10
NKOL 185/12			35,0	12,5	35,0	12,5	14,0	10
NKOL 185/14			35,0	14,5	35,0	15,0	16,0	10
NKOL 185/16			34,0	16,5	34,0	18,0	17,0	10
NKOL 185/20			35,	21,0	35,0	19,0	20,0	10
NKOL 240/12	240	21,2	39,5	13,0	39,5	13,0	14,0	5
NKOL 240/14			39,5	14,5	39,5	15,5	16,0	5
NKOL 240/16			38,0	16,5	38,4	16,5	17,0	5
NKOL 240/20			39,5	21,0	39,5	20,5	20,0	5