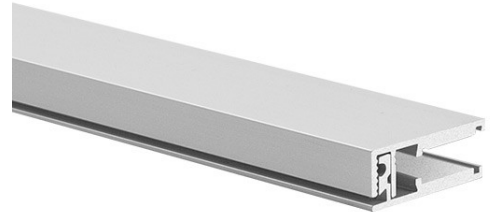


**PRODUCT DESCRIPTION**

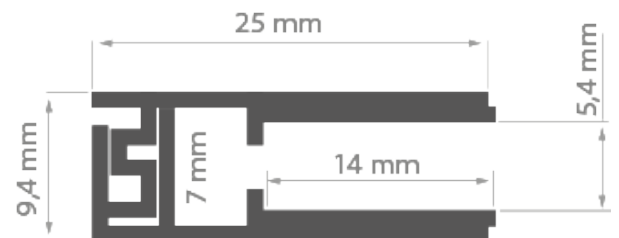
- Easy and secure mounting to panel edges
- Convenient installation of LED strips
- Adapted for panels with a thickness of 5-6 mm

Fill empty fields

Product nr.	
Fixture type	
Company	
Job name	
Date	

**TECHNICAL SPECIFICATION**

18017ANODAZM_1	Silver anodized	1000 mm
18017ANODAZM_2	Silver anodized	2000 mm
18017ANODAZM_3	Silver anodized	3000 mm

**RELATED PRODUCTS****END CAPS**



Ref: 24033

## MARKETING MATERIALS



Ref: 90051