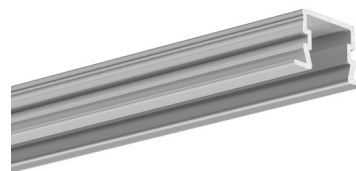


PRODUCT DESCRIPTION

- The end caps do not shorten the light line (the profile is the same length as the cover)
- Minimum profile size for 14 mm LED strips and obtaining a line of light
- Quick service and reliable installation of sealed 8-KLIK LED strips
- Modern design



FINISH :

Silver anodized Black anodized

*Custom colors available upon request

Fill empty fields

Product nr.	
Fixture type	
Company	
Job name	
Date	

TECHNICAL SPECIFICATION

Application

- for making lighting fixtures recessed in furniture boards

Assembly

- with mounting adhesive

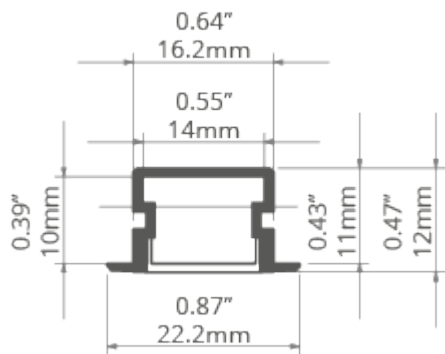
Additional information

- the profile fits in the thickness a drywall panel, i.e.12 mm (after cutting the panel, the profile does not protrude above it),
- dimensions of the groove for recessing the profile: 18 mm (width) x 13 mm (depth)
- line of light obtainable with a LIGER cover and LED strip with a minimum of 120 LED/m
- the bottom of the profile is 14.2 mm wide, which allows the use of RGBW strips

AVAILABLE LENGTHS

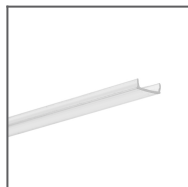
Ref. nr.	surface finish	available lengths
C1588ANODA_1	Silver anodized	1000 mm

Ref. nr.	surface finish	available lengths
C1588ANODA_2	Silver anodized	2000 mm
C1588ANODA_3	Silver anodized	3000 mm
C1588K7_1	Black anodized	1000 mm
C1588K7_2	Black anodized	2000 mm
C1588K7_3	Black anodized	3000 mm

TECHNICAL DRAWING

RELATED PRODUCTS

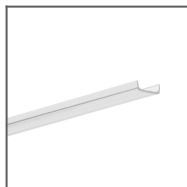
COVERS



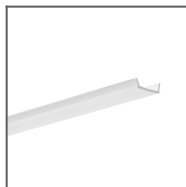
KA clear Cover
Ref: 17036



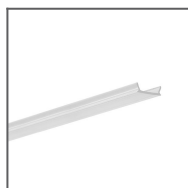
KA frosted Cover
Ref: 17035



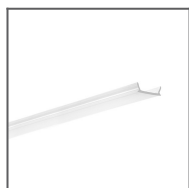
KA-COM clear
Cover
Ref: 17122



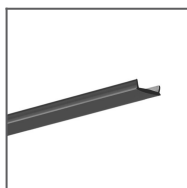
KA-COM frosted
Cover
Ref: 17121



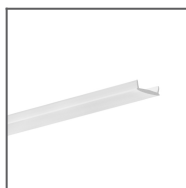
KA-PRO clear
Cover
Ref: 17065



KA-PRO frosted
Cover
Ref: 17064



LIGER black Cover
Ref: 17040



LIGER frosted
Cover
Ref: 17037

END CAPS



PDS-NK black End
cap
Ref: 24342



PDS-NK grey End
cap
Ref: 24338



PDS-NK-OTW
black End cap
Ref: 24343



PDS-NK-OTW grey
End cap
Ref: 24339

ACCESSORIES



8,8x1,2 Gland
Ref: 00802