

PRODUCT DESCRIPTION

- Well stabilized profile connections
- Possibility of building lighting fixtures with polygonal shapes

Fill empty fields

Product nr.	
Fixture type	
Company	
Job name	
Date	



TECHNICAL SPECIFICATION

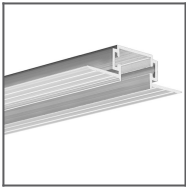
Application

FOR JOINING NON-ANODIZED PROFILES, equipped with a ZM socket at 45, 60, 90, 120, 135, 180 degrees. They also give the possibility of creating T-, X-, Y-shaped fixtures from profiles equipped with 3 ZM sockets.

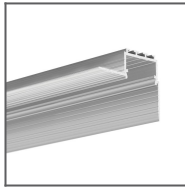
Assembly

With pressure screws.

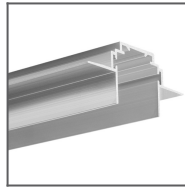
RELATED PROFILES



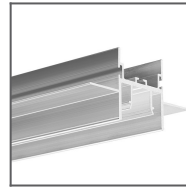
TPK-4 Profile
Ref: 18044



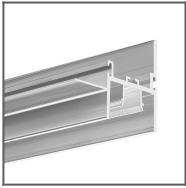
KOZUS-CR Profile
Ref: C0600



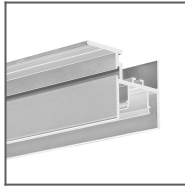
TEKNIK-ZM Profile
Ref: C0399



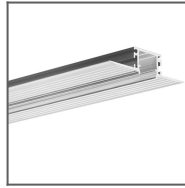
FOLED Profile
Ref: B8332V1



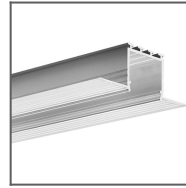
FOLED-BOK
profile
Ref: B8334V1



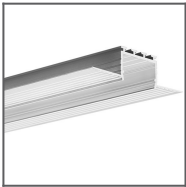
FOLED-SUF Profile
Ref: B8333V1



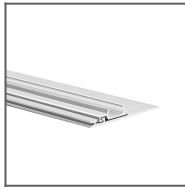
KOZMA Profile
Ref: 18040



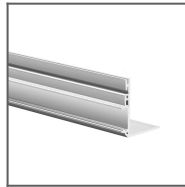
KOZEL Profile
Ref: B6454



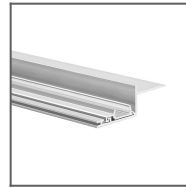
KOZUS Profile
Ref: B7823



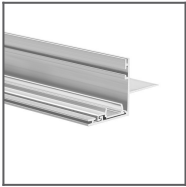
NISA-PLA Profile
Ref: 18028



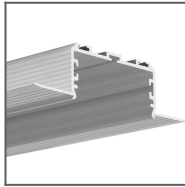
NISA-KON Profile
Ref: 18027



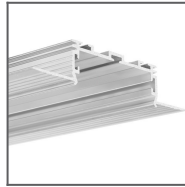
NISA-KRA Profile
Ref: 18026



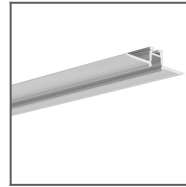
NISA-NI Profile
Ref: 18029



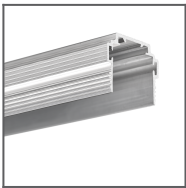
KOZEL-50 Profile
Ref: C0757



KOZUS-50 Profile
Ref: C0958



KOZEL-10 Profile
Ref: C1575



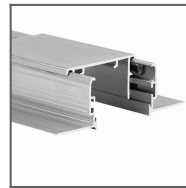
TEKNIK-ZM-TK
Profile
Ref: C1554



RAM-KOZE-50
Profile
Ref: 18055



RAM-KOZE-100
Profile
Ref: 18057



RAM-3035-KOZE
Profile
Ref: 18056