

PRODUCT DESCRIPTION

The hanger consists of two pieces with holes. Both parts should be inserted into the guide (large lock) of the selected extrusion. After insertion, they form a hanger that can be used to suspend the lighting fixture, by pulling e.g. a steel cable through it. To prevent the halves from moving in the guide, use the ZD BLOCK.

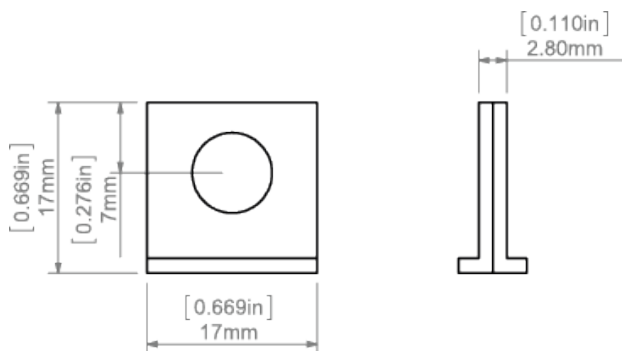
Fill empty fields

Product nr.	
Fixture type	
Company	
Job name	
Date	

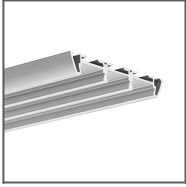


TECHNICAL SPECIFICATION

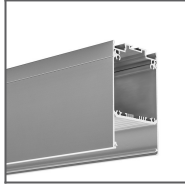
TECHNICAL DRAWING



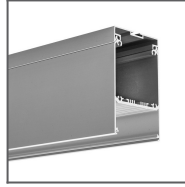
RELATED PROFILES



TRIADA Profile
Ref: B4476



DES Profile
Ref: 18030



GLADES Profile
Ref: 18036

RELATED PRODUCTS

ACCESSORIES



Steel wire FI-1 1m
Ref: 1397