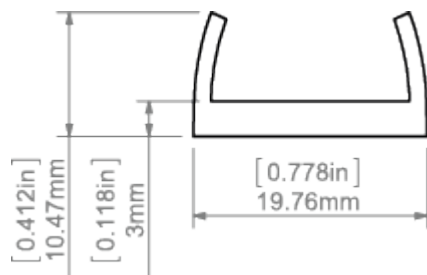


PRODUCT DESCRIPTION

A component for easy mounting of a lightweight lighting fixture to the surface. It is made of plastic and has a screw hole as well as flexible "wings" acting as a holder for the fixture. It is compatible with most standard extrusions.

Fill empty fields

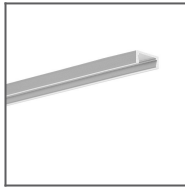
Product nr.	
Fixture type	
Company	
Job name	
Date	

**TECHNICAL SPECIFICATION****TECHNICAL DRAWING**

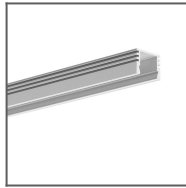
RELATED PROFILES



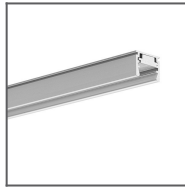
45-16 Profile
Ref: B8504



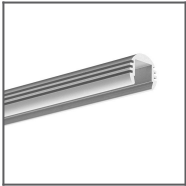
MICRO-ALU Profile
Ref: B1888



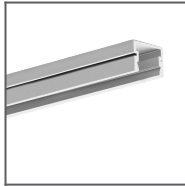
PDS-4-ALU Profile
Ref: B1718



REGULOR Profile
Ref: B468+43



PDS-O Profile
Ref: B3777



PDS-4-PLUS
Profile
Ref: C1263