

**PRODUCT DESCRIPTION**

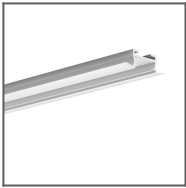
The ZD block is designed for the large lock and consists of two ZD nuts and two M3 pressure screws. It is made of sheet metal with a threaded hole (ZD nut), in which the M3x3 pressure screw is put, which fastens it in the large lock. The shape of the block allows it to be inserted into the large lock and rotated by 90 degrees, then it stops (blocks), which allows tightening the pressure screw.

Fill empty fields

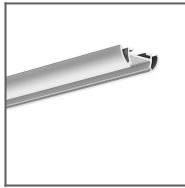
Product nr.	
Fixture type	
Company	
Job name	
Date	



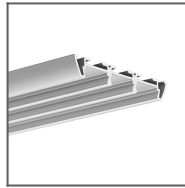
**RELATED PROFILES**



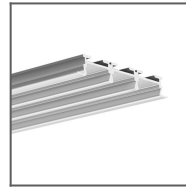
TAKO Profile  
Ref: B5392



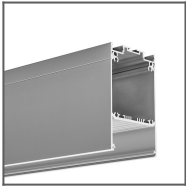
TOST Profile  
Ref: B5393



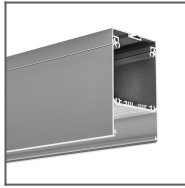
TRIADA Profile  
Ref: B4476



TRIADA-K Profile  
Ref: B4477



DES Profile  
Ref: 18030



GLADES Profile  
Ref: 18036