

PRODUCT DESCRIPTION

- accelerates fitting lighting in a suspended ceiling with service access from the attic
- indicates the installation locations of the lighting fixtures under the mineral wool
- makes it easier to locate power cables
- assembly and disassembly without tools or glue



Fill empty fields

Product nr.	
Fixture type	
Company	
Job name	
Date	

TECHNICAL SPECIFICATION

Application

The fastener is designed specifically for places where an additional layer of insulation (e.g. mineral wool) is placed above the mounting plane. For applications with service access from the attic.

Assembly

Through a suspended ceiling with access from above.

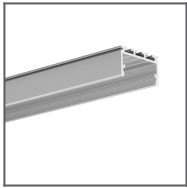
Additional information

The fastener is used to suspend profiles with ZM (small lock). It is necessary to have access to the mounting plane from above (e.g. from the attic). It is possible to adjust the height of the suspension in such a way that the LED fixture perfectly adheres to the mounting plane.

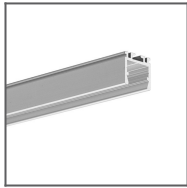
It is recommended to use:

- 2 fasteners for 1 m of the fixture
- 3 fasteners for 2 m of the fixture
- 4 fasteners for 3 m of the fixture

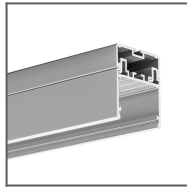
RELATED PROFILES



GIZA-LL profile
Ref: C0758



OPK-4 Profile
Ref: C0370



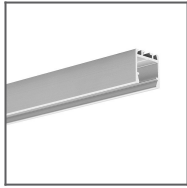
3035 Profile
Ref: 18039



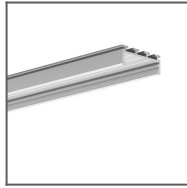
JAZ Profile
Ref: B8547



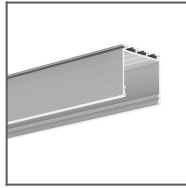
OLEK Profile
Ref: B8505



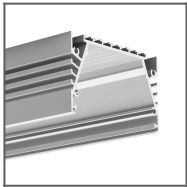
PDS-ZM Profile
Ref: B7696



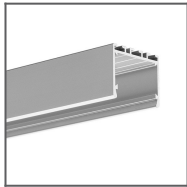
GIZA Profile
Ref: B5556



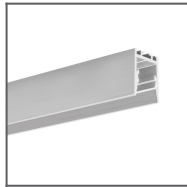
LIPOD Profile
Ref: B5554



SEPOD Profile
Ref: B6593



3035-O Profile
Ref: B8441



PDS-ZMG Profile
Ref: C1418