

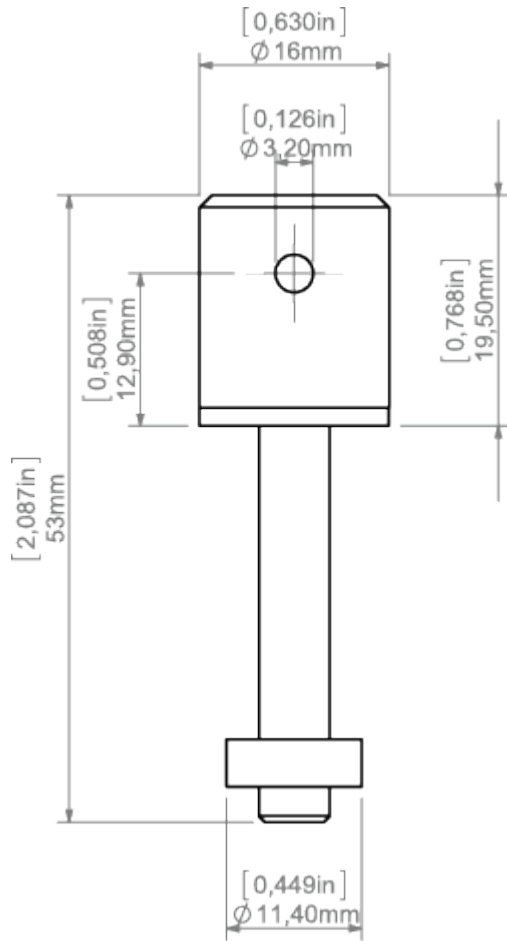
**PRODUCT DESCRIPTION**

Transverse conductive fastener, designed for attaching lighting fixtures to BOX profiles. It has a connection for one pole of electricity and a transverse hole for the FI-3 rod

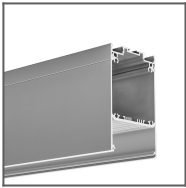
Fill empty fields

Product nr.	
Fixture type	
Company	
Job name	
Date	

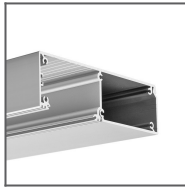
**TECHNICAL SPECIFICATION****TECHNICAL DRAWING**



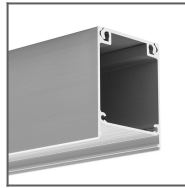
**RELATED PROFILES**



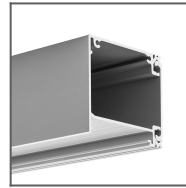
DES Profile  
Ref: 18030



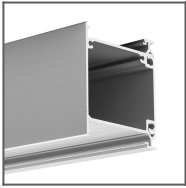
KIDES Profile  
Ref: 18031



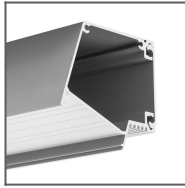
INTER Profile  
Ref: 18011



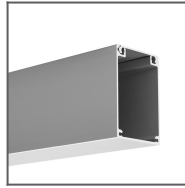
IKON Profile  
Ref: 18013



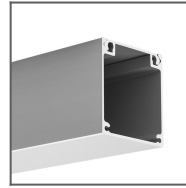
IDOL Profile  
Ref: 18014



IMET Profile  
Ref: 18012



BOX Profile  
Ref: 00640



NIBO Profile  
Ref: 18010

## RELATED PRODUCTS

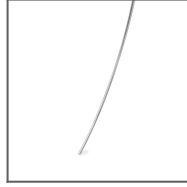
### ACCESSORIES



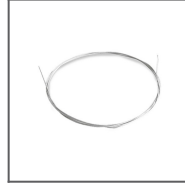
100 PUSZ brass  
chrome Rod 1 m  
Ref: 42518



Brass chrome FI-3  
Rod 1m  
Ref: 42501



Steel FI-3 Rod 53  
cm  
Ref: 1528



Steel cable with  
Cu FI 0.95 mm  
core  
Ref: 70240



Steel wire FI-1 1m  
Ref: 1397