

PRODUCT DESCRIPTION

The hanger consists of two pieces with holes. Both parts should be inserted into the guide (small lock) of the selected extrusion. After insertion, they form a hanger that can be used to suspend the lighting fixture, by pulling e.g. a steel cable through it. To prevent the halves from moving in the guide, use the ZM BLOCK

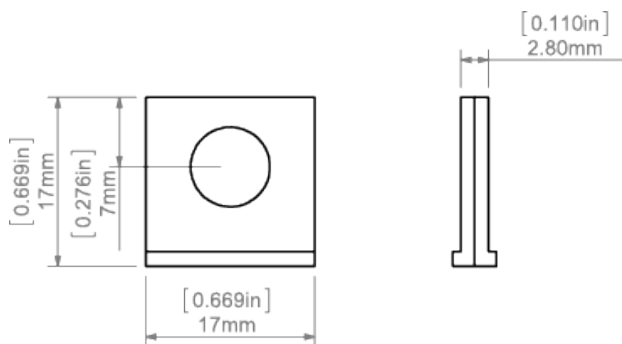
Fill empty fields

Product nr.	
Fixture type	
Company	
Job name	
Date	

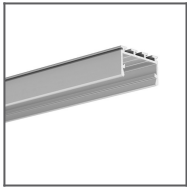


TECHNICAL SPECIFICATION

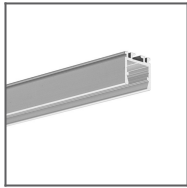
TECHNICAL DRAWING



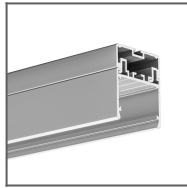
RELATED PROFILES



GIZA-LL profile
Ref: C0758



OPK-4 Profile
Ref: C0370



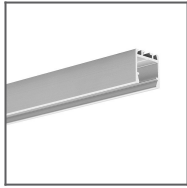
3035 Profile
Ref: 18039



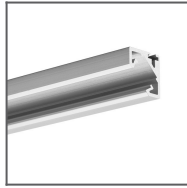
JAZ Profile
Ref: B8547



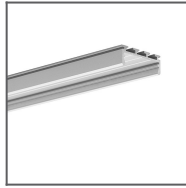
OLEK Profile
Ref: B8505



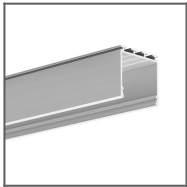
PDS-ZM Profile
Ref: B7696



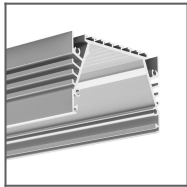
GLAD-45 Profile
Ref: B7009



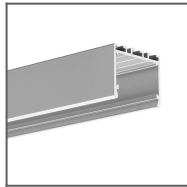
GIZA Profile
Ref: B5556



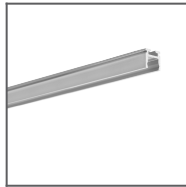
LIPOD Profile
Ref: B5554



SEPOD Profile
Ref: B6593



3035-O Profile
Ref: B8441



PIKO-ZM Profile
Ref: C1168



PDS-ZMG Profile
Ref: C1418

RELATED PRODUCTS

ACCESSORIES



Steel wire FI-1 1m
Ref: 1397