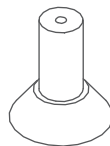
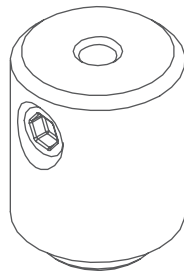


**Parts needed to mount the DP fastener**

Head (C)

Plastic base (B)

Plastic screw (A)

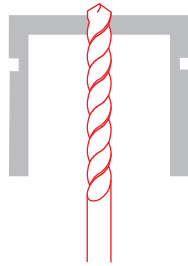


**Tools needed for mounting:**

- drill
- Allen wrench

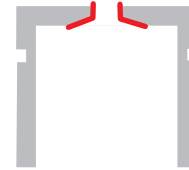
**NOTE!** A list of products corresponding with the selected accessories is available at [www.KlusDesign.eu](http://www.KlusDesign.eu)

1. Drill a hole with a diameter of 5 mm in the selected extrusion.

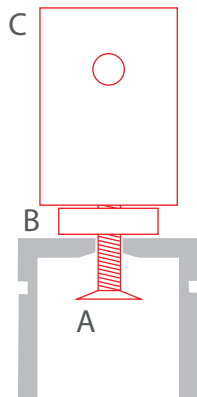


Fi 5 mm

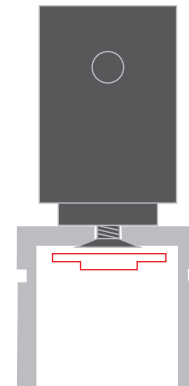
2. Bevel the hole so that the plastic screw head fits in.



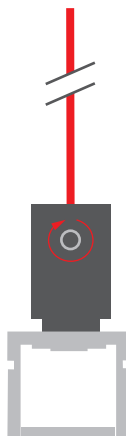
3. Mount the plastic screw (A), on the top of it mount the assembled plastic base (B) and head (C).



4. Mount the LED strip.



5. Insert the rod into the mounting bracket of the head. Block the rod by tightening the pressure screw in the head with the Allen wrench.



6. Suspend the lighting fixture using a chosen system.

