

PRODUCT DESCRIPTION

TEKNIK CLIP - a plastic element which fits into a SMALL FASTENER inside KLUS extrusions. It is designed for 'snap in' mounting. It can also be attached to holes a diameter of 4 mm, made in hard surfaces, preferably with a thickness of 1 mm up to 1.5 mm.

For one meter of extrusion it is recommended to use four clips for fasteners in holes or single row mounting baseboard or three pairs of clips for fasteners in TEKNIK profile and double row mounting baseboard.

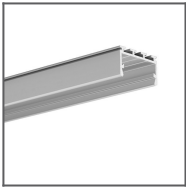
Clips should be fitted in parallel when used in double row applications. Fixtures mounted by TEKNIK clips cannot reach temperatures higher than 100°C.

Fill empty fields

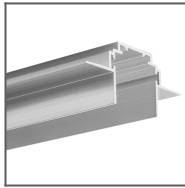
Product nr.	
Fixture type	
Company	
Job name	
Date	



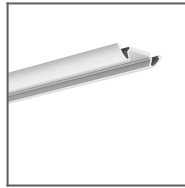
RELATED PROFILES



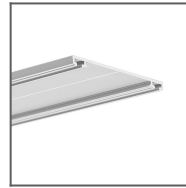
GIZA-LL profile
Ref: C0758



TEKNIK-ZM Profile
Ref: C0399



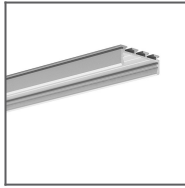
STOS-ALU Profile
Ref: B4369



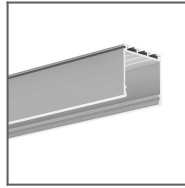
TETRA-43 Profile
Ref: W4476



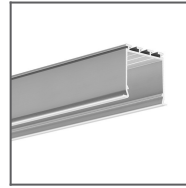
TETRA-78 Profile
Ref: W4508



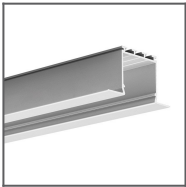
GIZA Profile
Ref: B5556



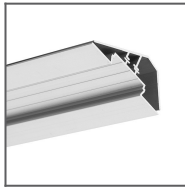
LIPOD Profile
Ref: B5554



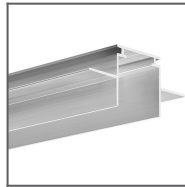
LOKOM Profile
Ref: B5553



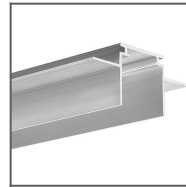
LARKO Profile
Ref: B5552



LOC-30 Profile
Ref: 18015



TEKNIK Profile
Ref: B5555V1



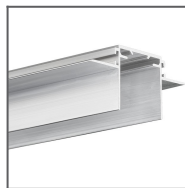
TEKUS Profile
Ref: B6638V1



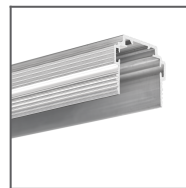
PIKO-ZM Profile
Ref: C1168



TEPIKO Profile
Ref: 18046



TEKUS-ZM Profile
Ref: C1293



TEKNIK-ZM-TK
Profile
Ref: C1554